

Bem-vind@s à

Universidade de Kiel

Dr. Martina Schmode
Relações Internacionais





1. Main Campus
2. University Hospital
3. Faculty of Engineering



Where?



- Comprehensive research-focused university
- 8 Faculties, 4 Priority Research Areas
- Strong in third party funding
- Repeated success in the *German Excellence Initiative* since 2006
- > 27.000 Students
(including > 2.400 international students from > 120 countries)
- 3.800 Staff members (including 2.400 academic staff)
- ~ 480 Full professors
- More than 200 Degree programmes



Research and Teaching

- that contributes towards peace, prosperity and maintaining a pluralistic, free society and which addresses the challenges we are facing.
- They are based on strong disciplines.
- They require interdisciplinary collaboration.
- And they deal with transdisciplinary issues.

- **Our aspiration:** *We find solutions to today's pressing problems and implement these together with stakeholders from society, economy and politics.*



Diversity

Kiel University views diversity as its strength is one of the first German universities to systematically pay attention to the diversity needs of its members.

- Since 2011: Diversity as a topic on leadership level (VicePresident)
- Since 2017: New position of a Central Diversity Commissioner
- 2015: Action plan for the implementation of the UN Convention on the Rights of Persons with Disabilities adopted
- „Diversity Charter“ signed in 2016
- 2019: certified in the diversity audit „Shaping diversity“
- 2022: „Institute for Inclusive Education“: disabled education professionals train students, teachers and researchers on inclusion



Sustainability: a cross-cutting topic in

- Research (e.g. Excellence cluster *Future Ocean*)
- Teaching & education (e.g. *School of Sustainability*)
- Campus Management (aim: to become climate-neutral by 2030)



Cross Faculty Research – 4 Priority Research Areas

Societal,
Environmental and
Cultural Change

Kiel Marine Science

Kiel Life Science

Kiel Nano,
Surface and Interface
Science



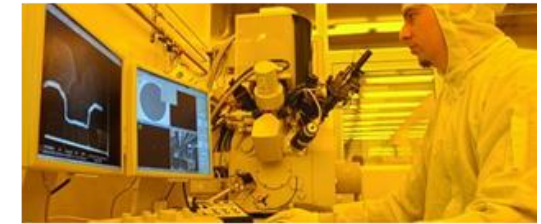
SECC



KMS



KLS



KiNSIS



Societal
Environmental
and Cultural
Change



KIEL
MARINE
SCIENCE

CONNECTED RESEARCH



KIEL
NANO
SURFACE &
INTERFACE
SCIENCE



Kiel University is founding member of the **Alliance for Excellent Research SH**, a regional network of 14 research-focused institutions that commit themselves to strengthen the **State of Schleswig-Holstein as a science hub**.



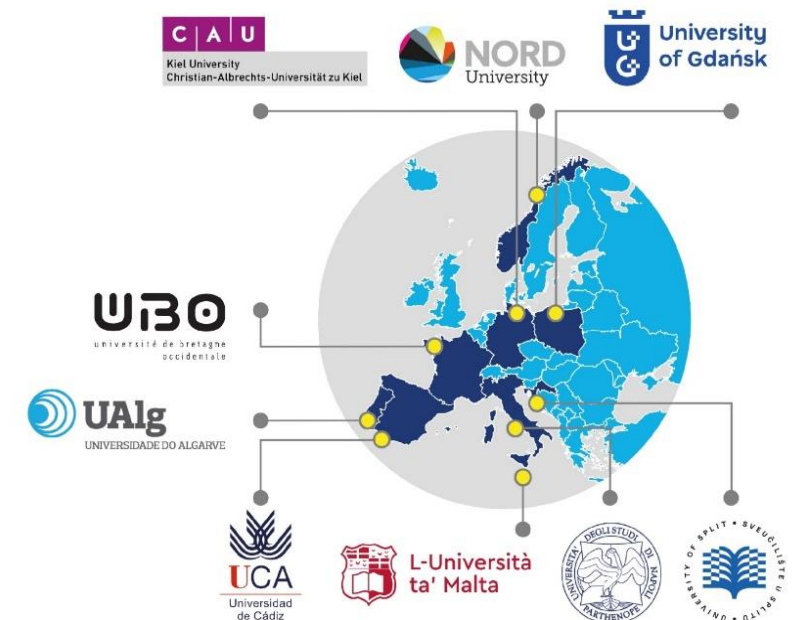
3 strategic objectives:

- Intensify inter- and transdisciplinary cooperation in cutting-edge research
- Improve the framework for excellent research, esp. in career advancement and use of joint research infrastructures
- Increase the visibility of Schleswig-Holstein as a region of excellent research

Among the partners:

- GEOMAR Helmholtz Centre for Ocean Research Kiel
- University Medical Centre Schleswig-Holstein (UKSH)
- Kiel Institute for the World Economy (IfW)
- Leibniz Information Centre for Economics (ZBW)
- Leibniz Institute for Science and Mathematics Education (IPN)
- Max Planck Institute for Evolutionary Biology
- Centre for Baltic and Scandinavian Archeology (ZBSA)
- Fraunhofer Institute for Silicon Technology (ISIT)
- European X-Ray Free-Electron Laser Facility GmbH (European XFEL)

- ~ 90 partnership agreements worldwide
- ERASMUS: approx. 250 partner institutions in Europe with ~ 520 institutional agreements
- Key European links with focus in Scandinavia and the Baltic Sea Region
- Key links with the USA (e.g. San Francisco Bay Area)
- Key links with Brazil (e.g. São Paulo, Recife, Porto Alegre)
- Key links with China (e.g. Zhejiang University in Hangzhou and Ocean University in Qingdao)
- Member in the *European University Alliance* SEA-EU



Economics:

- Economics
- Quantitative Economics
- Quantitative Finance
- Environmental and Resource Economics
- Mathematical Finance

Agriculture/Genomics:

- AgriGenomics
- Dairy Science

Engineering:

- Materials Science and Engineering
- Material Science and Business Administration
- Electrical and Information Engineering
- Electrical Vehicle Propulsion and Control (**E-PiCo**, ERAMUS Mundus)

Marine and Geosciences:

- Biological Oceanography
- Climate Physics: Meteorology and Physical Oceanography
- Marine Geosciences



Sustainability and Environmental Studies:

- Environmental Management
- Applied Ecology
- Sustainability, Society and the Environment
- Environmental and Resource Economics

Life Science/Medicine:

- Molecular Biology and Evolution
- Medical Life Science
- Drug Research and Technology
- Migraine and Headache Medicine
- Applied Scientific Dental/Medical Education & Research (tuition fee)
- Hospital Management (tuition fee)

Language and Cultural Studies:

- English and American Literatures, Cultures, and Media
- *Russland und Deutschland transregional* (taught in German, Double Degree with Saint Petersburg University/Russia)
- *Polen und Deutsche in Europa* (taught in German, Double Degree with Adam Mickiewicz University, Poland)

Law:

- LL.M. Programme (taught mostly in German)

- Courses in ~ **30 different languages**, including regional and minority languages

- Courses for **German as a foreign language**
 - ~ 500 participants from more than 70 nationalities (regular courses: ~ 300, summer courses and special courses: ~200 participants)

 - International Summer Courses in July/August and in September



The International Center

- provides advising to all international students and doctoral candidates
- helps with accomodation
- organises an orientation program
- helps with financial aid
- provides help for visa issues and work permission
- provides tutors who help during enrollment and during the semester
- offers events and excursions throughout the semester



Welcome Center

➤ Information & Support

- ✓ Before coming to Kiel
- ✓ On your arrival in Kiel
- ✓ During your stay
- ✓ Preparing to leave Kiel and

➤ ... Staying in touch

Our Guesthouses



PostDoc Center



➤ Offers for the promotion of young researchers after the doctorate



- High-quality education and access to cutting-edge research
- Vibrant and stimulating learning environment, allowing students to thrive both academically and personally
- International environment: diverse student body and faculty from around the world
- Rich campus life with wide range of student organisations, sports teams, cultural events...
- City of Kiel: good size, affordable living costs and high quality of life
- Easy access to other European Cities (e.g. Copenhagen, Oslo)



✓ The state of Schleswig Holstein is the one with the happiest people in Germany !

➤ and this since 2013
(“Glücksatlas“/ *Happiness Index*)



✓ And we even have a little piece of Brazil in our Region !

